

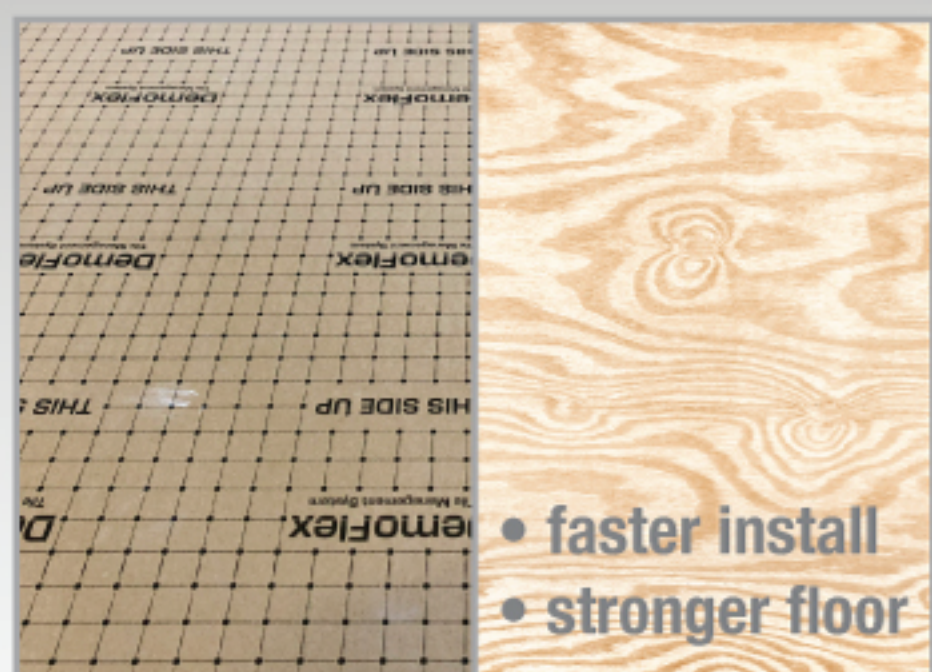
# MultiBoard Plywood Backer with TMS Technology:

## 2X FASTER TO INSTALL WITH MUCH HIGHER LOAD CAPACITY

- Easily Meet Project Deadlines
- No Mortar Needed Below MultiBacker
- Only Tile Backer-Board That Adds Strength
- Quieter Nights Sleep with Sound Isolation
- Repair Broken Tiles or Wrong Colors Quickly
- Material Costs Proportional to Alternatives

TCNA's Typical Subfloor/Underlayment Recommendations  
Residential Traffic: 550PSF for Tile or 825PSF for Stone

TCNA's Typical Subfloor/Underlayment Recommendations  
Commercial Traffic: 750PSF for Tile or 1,125PSF for Stone



NUE TILE's LF980 Plywood Backer-Board with TMS Technology:

LF980-60 over 3/4" OSB subfloor: 715PSF total

LF980-200 over 3/4" OSB subfloor: 855PSF total

LF980-330 over 3/4" OSB subfloor: 985PSF total

LF980-520 over 3/4" OSB subfloor: 1,175PSF total



Other Backer-Boards (Concrete/Fiber/Gypsum) or Uncoupling Mats:  
Board/Mat + Mortar required below: 655PSF over 3/4" OSB subfloor

- 'PSF': Pound per Square Foot for load span achieved
- Loads in PSF apply only to the floor panel system, NOT to the design of the floor joists
- Capacity of floor panel systems is based on analysis of the L/360 uniform load capacity
  - Based on APA form Q225 for load spans
- Assumes two layers with the strength axis (grain) of both layers perpendicular to joists
  - Loads are guidelines only and performance level is not guaranteed



# DemoFlex™ TMS BY NUE TILE

hundreds of sales & service centers



hundreds of thousands of square feet successfully performing across the United States since 2014

...help isolate these noises from the guests below

and avoid this with

**DemoFlex™ TMS Plus**

66 STC • 66 IIC • 22ΔIIC  
6" concrete slab with ceiling

59 STC • 52 IIC  
plywood & gypcrete with ceiling



**'non-detectable' silica exposure during tile repair or floor replacement**



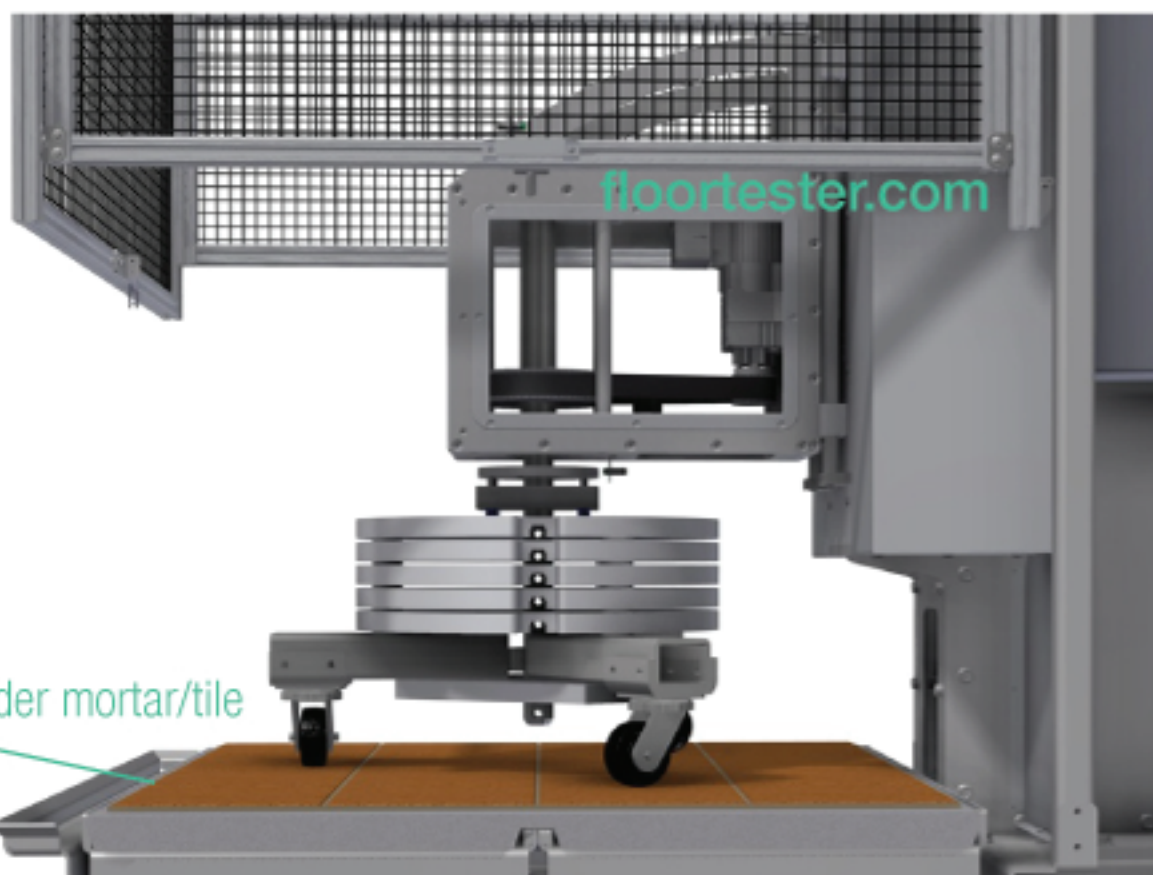
With Less Need for:

- Restricted Work Areas
- Medical Monitoring Employees
- Extra Ventilation Strategies
- Custom Respirator Systems
- Misc. Engineering Controls
- OSHA involvement

Optimal Vertical Bonding Force

Maximum Tile Bonding Force

Horizontal System Crack Resistance



'Robinson' Test for tile floor strength & performance per ASTM C627

Heavy Commercial



Lt. Commercial



Residential



**TMS Plus**

**TMS**

cycles 0 2 4 6 8 10 12 14